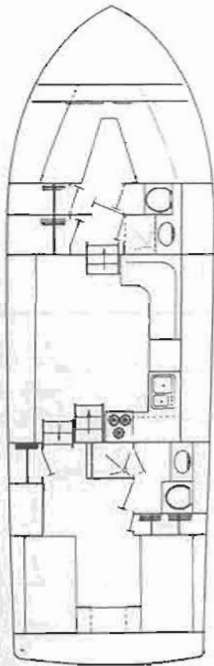




Shepherd
1967

ONLY A FEW yachtsmen will have the thrill of taking command of a new Shepherd yacht in 1967. Quality demands limited production. The carefully selected materials and the meticulous craftsmanship used to construct any first-quality product are never plentiful, and we use only the best of both. We could build many more boats, if we would accept second best, but we won't. The proud owner of every one of our boats knows he has the finest yacht that could be constructed.

If you are seriously seeking a new yacht for the summer of 1967, we sincerely solicit your inquiry, but we do earnestly suggest that you contact a Shepherd dealer at your earliest convenience so that we may have ample time to put your yacht in hand, and deliver her to you in time for next season.



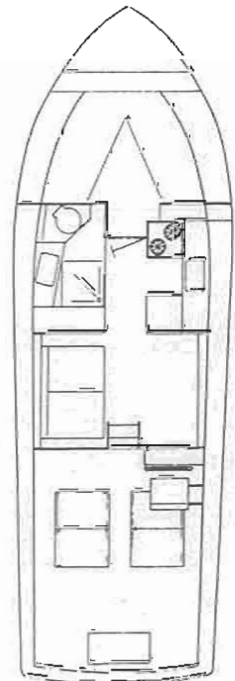
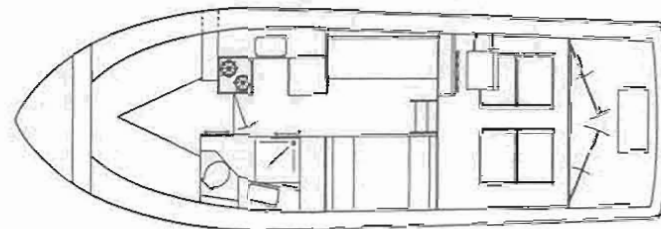
FORTY-ONE FOOT MOTOR YACHT

With a master stateroom aft, and guest stateroom forward, the forty-ones feature an exceptionally large salon for gracious entertaining. The salon, completely paneled in hand-finished mahogany as is the remainder of the interior, can also be utilized (via convertible furniture) for additional sleeping. In common with all Shepherds, the forty-ones feature Formica on all horizontal interior surfaces, all-electric cooking and refrigeration, and a host of interior appointments designed to enhance her appearance and livability.



THIRTY-SIX FOOT EXPRESS AND SEDAN CRUISERS

Excellent performance and accommodations are the twin hallmarks of our thirty-six footers. Although the smallest Shepherds to be built in 1967, these boats incorporate every quality feature of the larger yachts, such as Honduras mahogany transoms and trim, selected white oak framing and teak decks. Two layouts accommodating up to eight people are available.

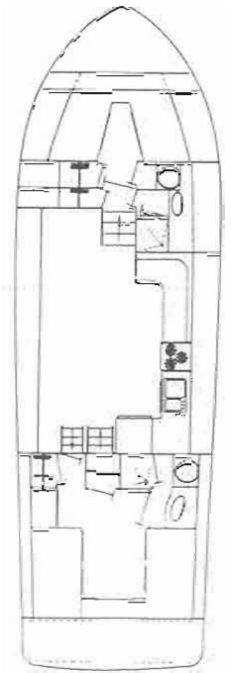




FORTY-SIX FOOT MOTOR YACHT

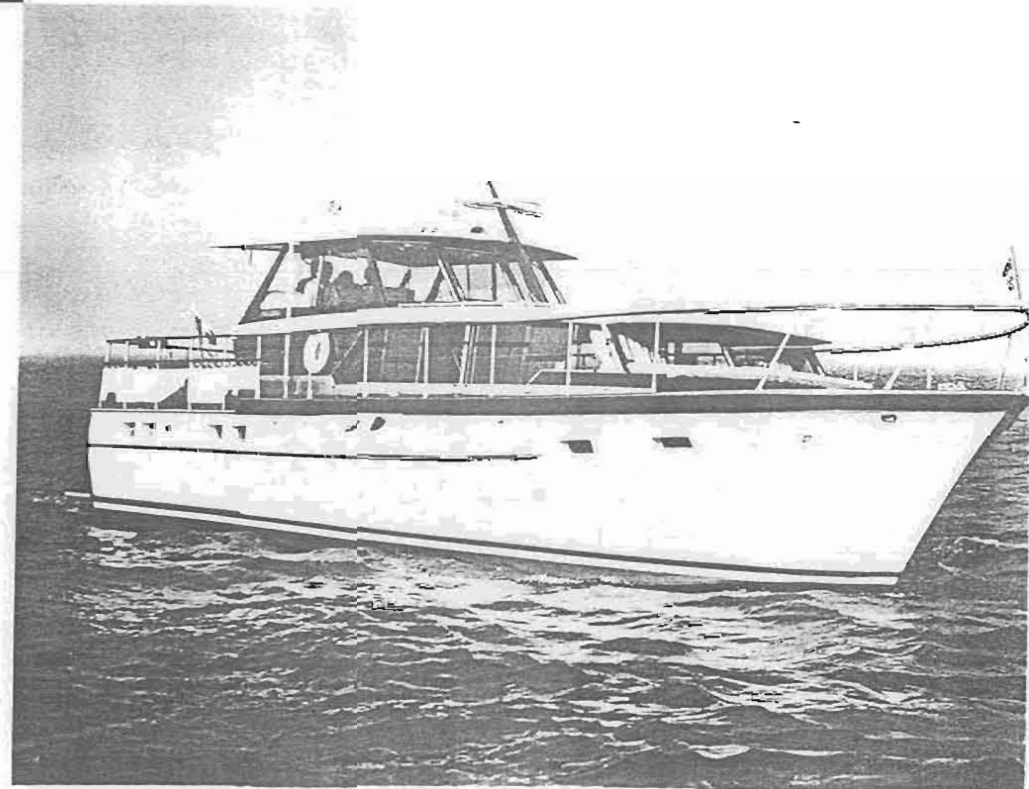
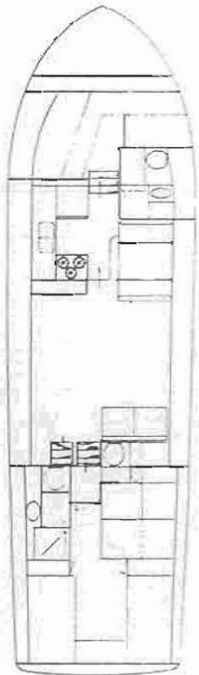
Acclaimed as one of the finest performing large yachts, the forty-six foot Motor Yacht offers maximum livability and luxury. Various interior arrangements are available, each one specially designed and engineered to completely satisfy the variety of purposes to which the forty-six may be put, be it long-range cruising or afternoon entertaining. Standard powering is a pair of 290 horsepower engines which provide a top speed of 25 miles per hour. Diesel power is, of course, available.

Double aft Cabin Model available.



FIFTY FOOT MOTOR YACHT

The Queen of the Shepherd yachts, the fifty-foot Motor Yacht is, in her size, the absolute last word in luxury and convenience. From her double-planked Honduras mahogany transom to her selected white oak stem, nothing whatever is omitted that can add to these qualities. Since these yachts are built on a semi-custom basis, a wide variety of interior arrangements are possible. The accompanying schematic drawing shows one possible layout of the fifty-footer. You will note that it indicates three double staterooms, each with its own fully electric head and shower, plus a spacious salon and extremely ample storage space.



SPECIFICATIONS

	LOA	BEAM	DRAFT	Freeboard Fwd	Freeboard Aft	Height on Cradle	Weight (App.)	Headroom	Fuel Capacity	Water Capacity
36' MODELS	36'3"	12'0"	33"	53"	44"	11'9"	14,000	6'7"	150 Gallon	43 Gallon
41' MODELS	41'0"	13'0"	40"	71"	60"	15'0"	19,000	6'5"	367 Gallon	146 Gallon
46' MODELS	46'4"	14'0"	44"	86"	65"	16'3"	26,000	6'5"	405 Gallon	146 Gallon
50' MODELS	50'0"	14'0"	46"	86"	65"	16'3"	34,000	6'5"	405 Gallon	146 Gallon

	Bottom	Topsides	Selected White Oak Frames	Deck
36' MODELS	Double 1/2" Mahogany	Oak Batten Seamed. 5/8" Mahogany	1 1/8" x 4" (Doubled on Bottom)	1/2" Teak on 1/2" Marine Plywood
41' MODELS	Double 5/8" Mahogany	Oak Batten Seamed. 5/8" Mahogany	1 1/8" x 4 1/2" (Doubled on Bottom)	1/2" Teak on 5/8" Marine Plywood
46' MODELS	Double 5/8" Mahogany	Oak Batten Seamed. 3/4" Mahogany	1 1/8" x 5" (Doubled on Bottom)	1/2" Teak on 5/8" Marine Plywood
50' MODELS	Double 5/8" Mahogany	Oak Batten Seamed. 3/4" Mahogany	1 1/8" x 5" (Doubled on Bottom)	1/2" Teak on 5/8" Marine Plywood

STANDARD EQUIPMENT ON ALL 1967 MODELS

Hardtop with headlining, domelight, sliding side glass window • Teak decks forward, aft, and sides • Laminated safety plate glass throughout • Automatic pressure water system • Electric refrigeration (12 cu. ft.) • Shower with concealed basin, sump pump and curtain • Heavy duty windshield wiper • Automatic bilge pump • Blower • Screen and drapes • Shore plug and 100 volt double outlets • Twin trumpet chrome horns • Forward hatch screen • Dish locker • Glass racks • Running lights • Full instrumentation • Garboard drain • Enclosed toilet room with two (2) entrances with vanity, shower, sink, mirror, drapes, storage space and towel rack • Deluxe custom helmsman's chair, adjustable • Cabin handrails • Ventilating upper windshields • Mahogany lighted mast with yardarm • Mahogany stern flagpole • Gate valves on engines and head • Fully bonded against electrolysis • Window locks • Deep pile carpet throughout • All necessary cleats, chocks, uncles and bitts • Stainless steel moulding and trim • Engine compartment insulated • Hatch with deadlight • Hydraulic reverse and reduction drive • Drawers throughout

SAFETY EQUIPMENT (Approved)

Fog Bell • 8 life jackets (6 on 36 foot models) • Fire extinguishers as required by law

In Canada

Anchor and 100 feet of line • Life ring and line

41, 46, AND 50 FOOT MODELS ONLY

Continuous stainless steel railing from bow to taffrail • Hot water heater • Automatic 6.5 kw Auxiliary generator, wired with auto. breaker panel • 110 volt stove oven rotisserie • Weather curtain • Additional bilge pump • Additional blower • Additional enclosed toilet room aft with enclosed shower • 110 volt lamps in aft stateroom, main salon and for'd stateroom • Beverage cabinet • L-shaped lounge with table to convert to sleeping accommodations • Four (4) mirrors • Sliding doors cabinets along main salon side • Limber chain • All cabin and engine compartments with 12 volt lights • Owner's choice of upholstery, carpets, drapery, interior wood finish, etc. • Seat and cushions across forward cabin window with storage under • Master aft stateroom with vanity, chest of drawers, twin beds and bedspreads.

46 AND 50 FOOT MODELS ONLY

Electric head aft • Hide-a-bed • Engine compartment floor lined with linoleum • Ladder in escape hatch—if single aft stateroom layout • Hand bilge pump heavy duty, mounted • Galley exhaust fan • Rattan sections in all doors

36 FOOT MODELS ONLY

Hinged engine hatches • Two (2) burner 110 volt electric stove with breaker • Stainless steel sink • Breadboard • Screened window in cabin door • Gates in both railings around aft cockpit • Two (2) portlights (screened) in forward compartment • Reduction drive 2:1 • Built in seat across forward window with cushions

 **Shepherd BOATS LTD.**
a wholly owned subsidiary of Trojan Boat Co.

NIAGARA-ON-THE-LAKE

• ONTARIO, CANADA